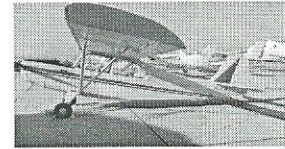




FIRST FLIGHT CORP.
 Brown Field Airport
 6810 Curran St. San Diego, CA 92154
 (619) 661-6522



June 2015

We would like to take this time to remind you that we are here to provide you with quality service and information about Pilot Certifications, Aircraft Rental and Aircraft Maintenance.

Thoughts from Tom
Make sure to check tires during preflight for bald spots whoever flew the aircraft before will get charged for new tires.

The Quest for a Perfect Landing
 By Alton K. Marsh - AOPA's Flight Training Magazine

Checklist for perfect landings

- Fly a perfect pattern — visualize it over the ground
- Retrim with every configuration change
- Find a final-fix point, a barn, tree, or fence, that is one-half mile from the runway threshold, and be 400 feet agl at that point
- Aim for the second centerline stripe and land on the third
- Be completely stabilized at 300 feet — in the right configuration and at the correct airspeed
- Control your airspeed to plus or minus 3 knots of the book-recommended speed
- Know when to go around
- Carry a little bit of power, as in a soft-field landing
- Keep the nose constantly in motion, rising to the landing attitude

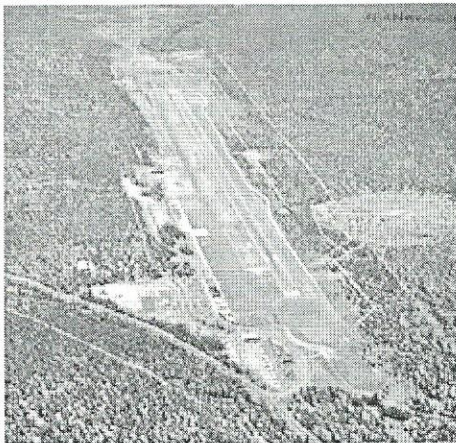
Common landing accident scenarios

- Lack of eye-hand coordination
- Failure to handle windy conditions properly
- Fatigue or complacency after an uneventful flight
- Inadequate crosswind correction or improper technique

What's Going On?

Check us out at: www.FirstFlightCorp.com
 Email: FirstFlightCorp@yahoo.com

Airport of the Month: KGCN



Located in Tusayan, Arizona. Grand Canyon National Park Airport is the perfect airport to visit this month. With summer right around the corner the weather is perfect for a fun weekend getaway with your friends and family.

CHALLENGE:

From whom should a departing VFR aircraft request radar traffic information during ground operations?

- A. Clearance delivery
- B. Ground control, on initial contact.
- C. Tower, just before take off.

Last month's newsletter CHALLENGE Question and Answer:

QUESTION: While on a night flight, you see a rotating beacon flashing green and white. This is a(n) ____.

ANSWER: D. civilian land airport.

Congratulations to our new SOLO Pilots!



Francisco Munoz
Cessna 172 N9151H – May 4th, 2015
Flight Instructor Pete Grootendorst
Armando Arce
Cessna 172 N3927R – May 4th, 2015
Flight Instructor Pete Grootendorst
Craig Cornford
Cessna 172 N3927R – May 12th, 2015
Flight Instructor Pete Grootendorst

Ken's Korner

I KNOW NOTHING EXCEPT THE FACT OF MY IGNORANCE.

- Socrates

Pilot Translation:

"Your private license is your ticket to continued education."

KEEP FLYING!!!